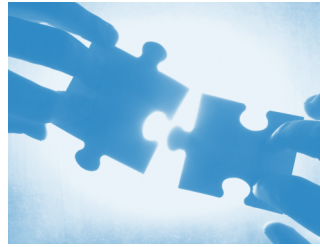




# XINTEC™

FRAUD CONTROL &  
REVENUE ASSURANCE



## XINTEC FMS*lite*™

XINTEC's FMS*lite*™ is a comprehensive fraud management solution, enabling detection and investigation of fraud losses across all business lines and services. The modular architecture of XINTEC's FMS*lite*™ has been designed to adapt to the needs of fixed line and mobile communication service providers (CSPs), as well as long distance carriers and next-generation CSPs. The technical architecture lets you benefit from a robust application and a web-based user interface, without additional third party software license fees, and with minimum administration.

XINTEC's FMS*lite*™ features include:

**Roaming Call Detail Record (CDR) Collector**      Validates and loads outbound roaming call records received from roaming partners from both NRTRDE and TAP files to have full roaming visibility.

**Data Feeders**      Customized modules to load usage and subscriber information into the FMS*lite*™ database, such as MSC CDR and prepaid recharge information.

**Subscriber Profiling**      FMS*lite*™ lets you divide your customer base into different profiles, e.g. prepaid, postpaid, business and MVNO. Distinct configuration can be defined per subscriber.

**Usage Profiling**      FMS*lite*™ monitors the usage of services by each subscriber and it automatically defines a usage profile to every subscriber. It is then able to detect suspicious and unusual deviations from normal/allowed usage levels.

**Hot-listing**      With FMS*lite*™ you can define and track suspicious handsets, B-numbers and subscribers. Alerts are raised as soon as there is activity from hot-listed entries.

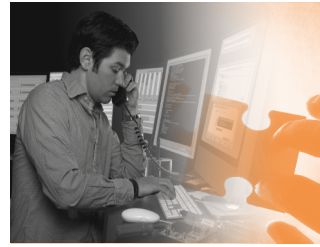
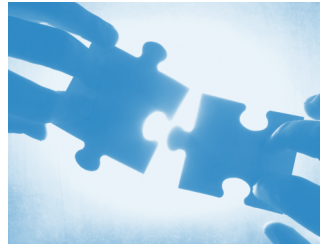
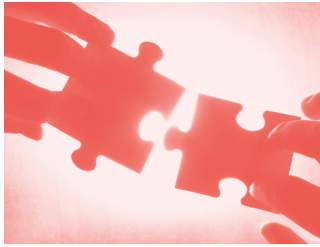
**Roaming Fraud**      Specific algorithms are used to identify roaming fraud. Location of subscribers and usage profiles are tailored to the roaming business and scenarios.

**SIM Box/Interconnect Bypass Fraud**      Equipped with a powerful rules-based SIM box profiler, it is able to analyze a large number of call records and report suspicious behaviour.

**Prepaid Fraud**      Customized interfaces lets FMS*lite*™ import recharge/top-up information and detect suspicious cases, like High Frequency Recharge, High Value Recharge and Odd Value Top-ups.

**Data/GPRS Control**      With FMS*lite*™ you are able to monitor the usage of data services in near-real-time. Domestic and roaming usage can be tracked for fraud detection and credit control purposes, e.g. to prevent GPRS bill shock.

**Web-based User Interface and Reporting**      Scheduled reports notify you about new alarms in the system and a web-based user interface lets analysts and administrators browse through the data and investigate and manage fraud cases.



## Solution overview

FMS*lite*™ is a standalone and lightweight system able to load call detail records (CDR) from different sources to provide you full visibility and control. You can benefit from FMS*lite*™ whether or not you have your own Fraud Management System (FMS).

Operators who currently use an FMS may not be able to detect certain types of fraud or revenue leakages, such as Roaming fraud or Interconnect Bypass fraud. FMS*lite*™ identifies these revenue losses as well as the traditional fraud types such as Subscription, Call Sell and Premium Rate Services (PRS) fraud.

## How FMS*lite*™ will make a difference

FMS*lite*™ will help you pinpoint fraud and revenue losses from within your own call records. It has also been specifically designed to monitor services involving other providers, such as roaming partners, international operators, MVNO's and PRS providers.

XINTEC's FMS*lite*™ provides you detection for all standard fraud scenarios including:

- Prepaid Recharge Fraud
- SIM Card Cloning Fraud
- Subscription Fraud
- Roaming Fraud
- Internal Fraud
- Interconnect Bypass Fraud
- Call Selling Fraud
- Premium Rate/Audiotext Service Fraud (PRS)
- International Revenue Share Fraud
- Call Conference/Multi-Party Calls Fraud

Additional benefits of FMS*lite*™ are:

- Case management that drives operational efficiency
- 3G/GPRS credit control
- NRTRDE (roaming) compliance
- Low total cost of ownership (no 3rd party software license fees apply)

If you would like further information please contact us:

Phone: (+ 352) 35 78 28 - 1  
E-mail: [info@xintec.com](mailto:info@xintec.com)  
Website: [www.xintec.com](http://www.xintec.com)

