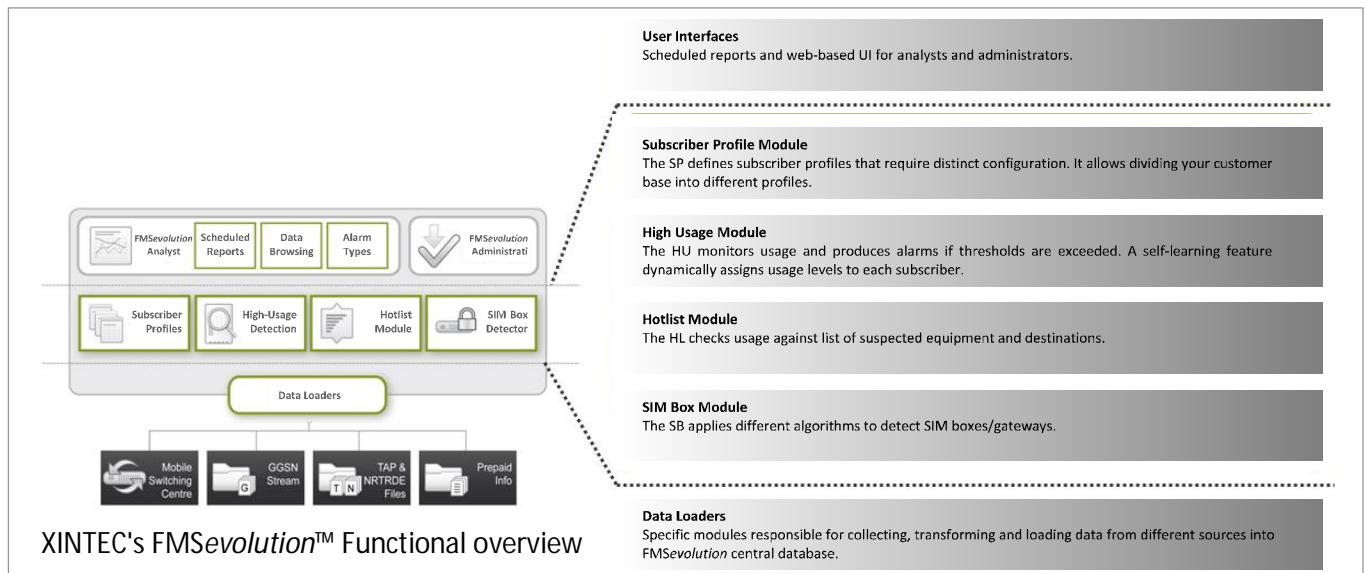


## XINTEC FMSevolution™

XINTEC's FMSevolution™ is a smart and low-cost software solution to combat the most common fraud types experienced by Communication Service Providers (CSPs) today. This innovative fraud management software solution is flexible for both the user and the subscriber, and its performance and processing capacity can be scaled to meet the demands of Tier 2 and Tier 1 CSPs.



With increased alarm accuracy and improved customer segmentation, each subscriber is seen as a separate entity with a unique flag per user. Fully automated processing of CDR files (in ASN.1, binary, ASCII formats) with a lightweight but powerful ETL engine means that different subscriber categories can be created, e.g. prepaid, postpaid and postpaid unlimited, and this can be achieved through integration of customer data into configurable time slots. If a subscriber's profile shows over-usage according to their tariff plan, then an alarm will be raised. A threshold-based detection engine will trigger high-usage alarms.

FMSevolution™ has built-in statistical functions and tools for detecting SIM boxes and raising alarms to prevent interconnect bypass fraud. Working in conjunction with XINTEC's SIM Box Detector, fraud is detected using advanced customer profiling and the identification of bypassed calls.

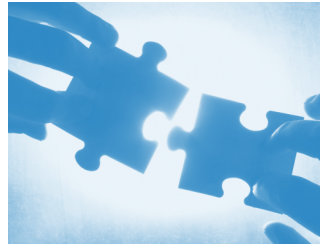
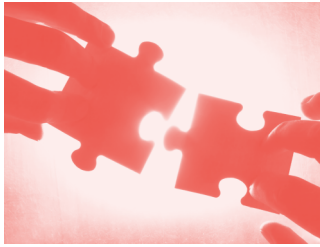
The number of profiles FMSevolution™ can support is unlimited. With increased reporting functionality, including a flexible dashboard, multiple graphical layouts and open data formats, the system can be easily configured to handle the real-time e-mail notification of fraud detection reports.

The RDBMS system can run several processes concurrently to increase the processing ability per stream, thus increasing workload without the server being hindered. FMSevolution™ allows the CSP to customize the threshold, i.e. the threshold per profile on domestic and roaming traffic data. The CSP has full access to the system so they are able to perform their own queries. A modular approach is one of the key benefits of this technology, giving the CSP the flexibility to pick and choose from a selection of detection modules. The CSP can build the fraud management system to specific requirements and then tailor it to their individual needs. New data sources and new detection modules can be added as required.



# XINTEC™

FRAUD CONTROL &  
REVENUE ASSURANCE



XINTEC's FMSevolution™ - modules currently available:

### **Fraud Detection Engine**

- Flexible subscriber profiling supporting prepaid/postpaid and multiple thresholds and destination zones
- High-usage alarms
- Hotlisting of suspicious subscribers
- Hotlisting of suspicious equipment
- Hotlisting of suspicious destinations

### **Domestic Module**

- Loading of MSC CDR data (Nokia, Ericsson, Alcatel-Lucent, Huawei, Siemens, ZTE)
- Profiling, hotlisting and high-usage detection

### **GPRS Module**

- Loading of GPRS CDR data (Nokia, Ericsson, Alcatel-Lucent, Huawei, Siemens)
- Profiling hotlisting and high-usage detection

### **Roaming Module**

- Loading of NRTRDE (TD.35) and TAP 3.X (TD.57) files
- Profiling, hotlisting and high-usage detection

### **SIM Box Detection**

- Specific statistical functions and tools based on forensic data analysis
- CDR correlation algorithms to detect bypassed calls
- No need for test call probes (to avoid higher marginal costs)

### **Prepaid Fraud Detection**

- Monitoring of recharge event data
- 4 different independent monitoring periods per detection (e.g. 24hr, 48hr, 7 days, 30 days)
- Detection of high-value recharges
- Detection of high number of failures
- Detection of high number of recharges
- Odd value recharge detection
- Reused voucher detection

Additional detection modules can be built and customized on request, if they do not already feature on our product roadmap. No third-party software (even DBMS) is required to deploy XINTEC's FMSevolution™, thus keeping the total cost of ownership low.

If you would like further information please contact us:

Phone: (+ 352) 35 78 28 - 1  
E-mail: [info@xintec.com](mailto:info@xintec.com)  
Website: [www.xintec.com](http://www.xintec.com)